

Phylogenomic Perspectives on Reproductive Isolation and Introgression

Deren Eaton, Columbia University

Botany 2019, Tucson

Outline: Plant Perspectives

1. Phylogenomic data generation
2. Species tree inference
3. Network/admixture inference
4. Reproductive isolation and phylogenomics
5. Advances on the horizon...

Generating data: reference genomes

Quality reference genome assemblies are now *generally* obtainable.

Generating data: reference genomes

Quality reference genome assemblies are now *generally* obtainable.

> Long read technologies (e.g., Oxford Nanopore)



Nanobind Plant Nuclei Big DNA Kit -
Alpha Version
SKU NB-900-801-01

\$400.00



bioRxiv Bioinfo
@biorxiv_bioinfo

Efficient de novo assembly of eleven human genomes using PromethION sequencing and a novel nanopore toolkit [biorxiv.org/cgi/content/sh...](https://www.biorxiv.org/cgi/content/show/10.1101/000000) #biorxiv_bioinfo

bioRxiv
THE PREPRINT SERVER FOR BIOLOGY

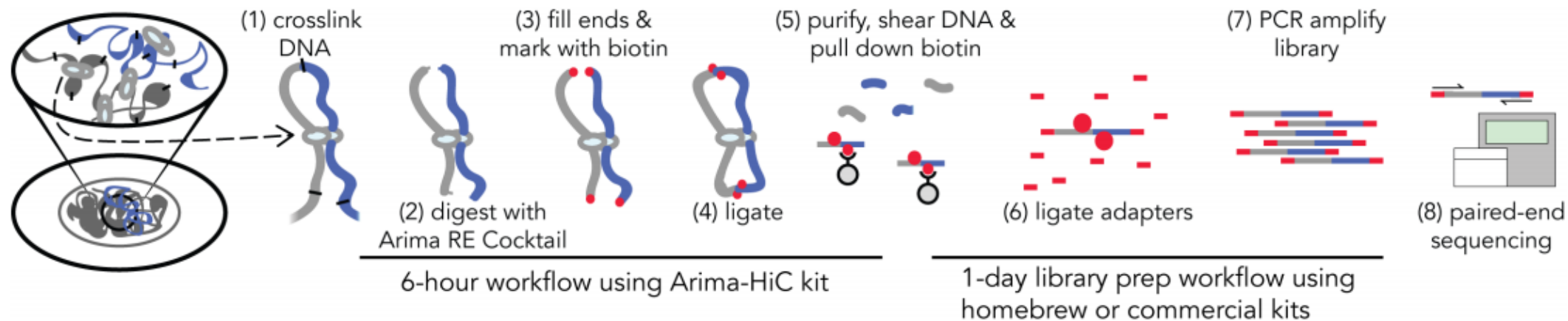
Efficient de novo assembly of eleven human genomes using Pr...
Present workflows for producing human genome assemblies from long-read technologies have cost and production time
[biorxiv.org](https://www.biorxiv.org)

10:31 AM · Jul 26, 2019 · [biorxiv_bioinfo](https://www.biorxiv.org)

Generating data: reference genomes

Quality reference genome assemblies are now *generally* obtainable.

> Long range scaffolding technologies (e.g., Chicago, Hi-C)



Generating data: reference genomes

Caveat: requires large(ish) quantities of (fresh/flash frozen) leaf tissue.



Generating data: reference genomes

Caveat: requires large(ish) quantities of (fresh/flash frozen) leaf tissue.

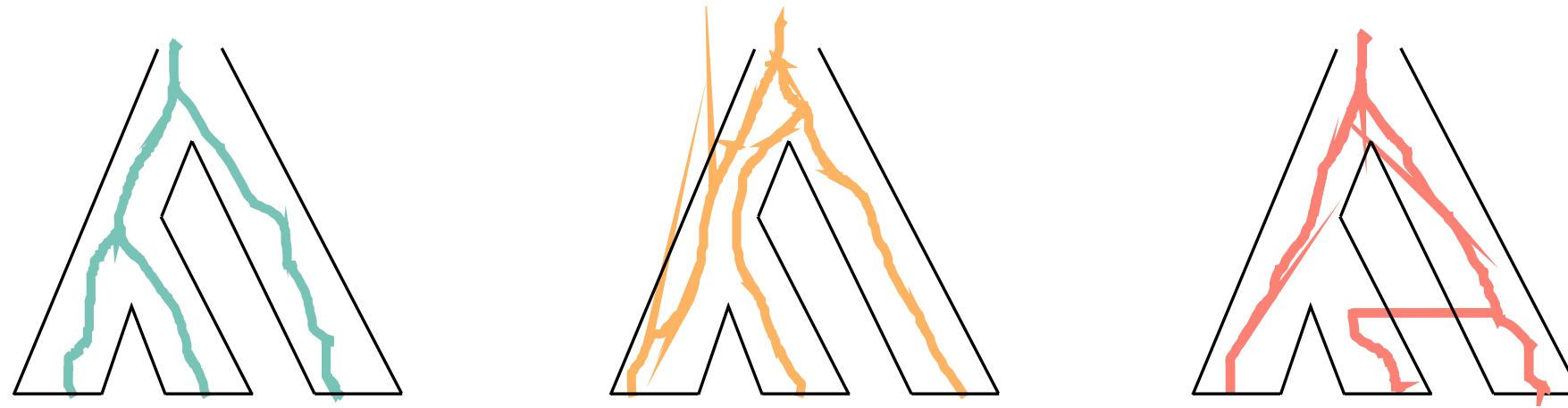


Outline: Plant Perspectives

1. Phylogenomic data generation
2. Species tree inference
3. Network/admixture inference
4. Reproductive isolation and phylogenomics
5. Advances on the horizon...

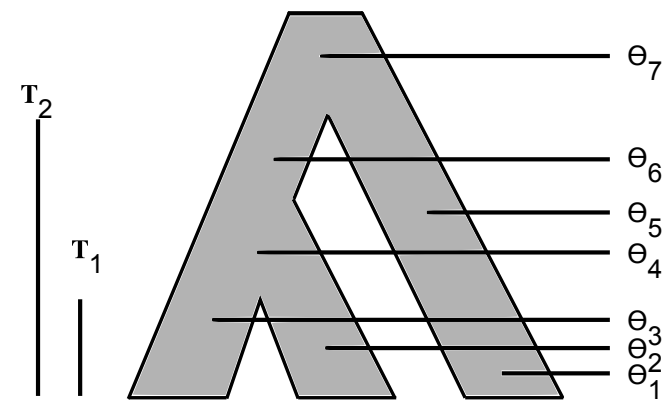
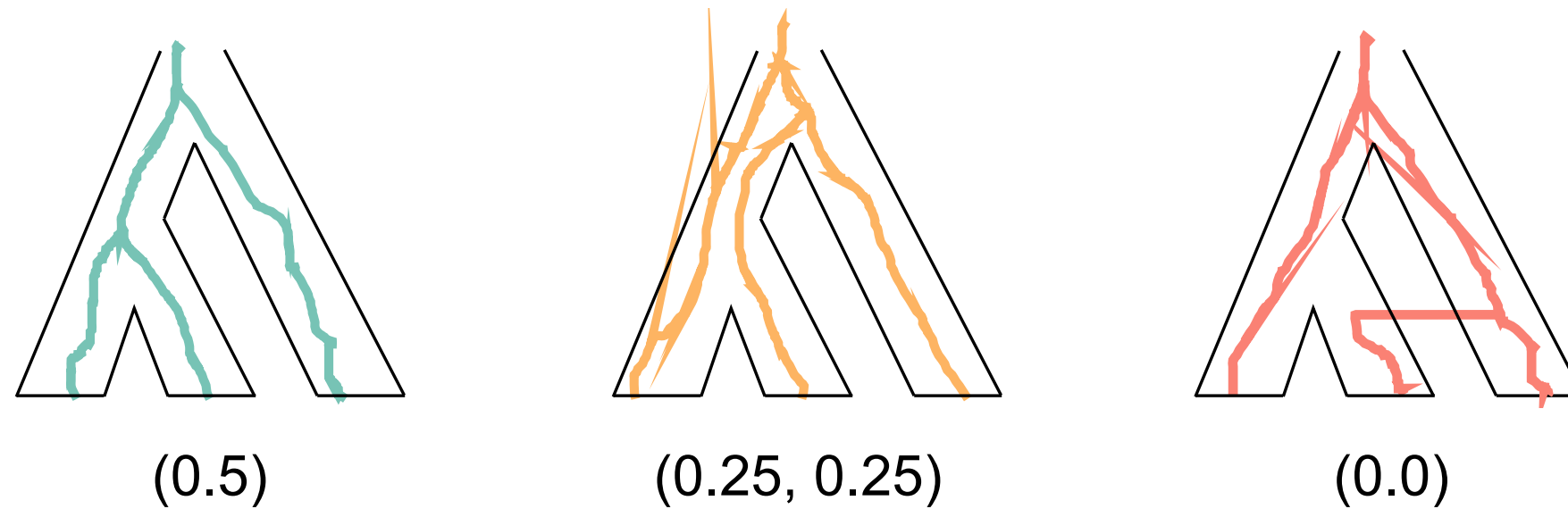
Coalescent variation

Different genomic regions have different genealogical histories.



Coalescent variation

Different genomic regions have different genealogical histories.

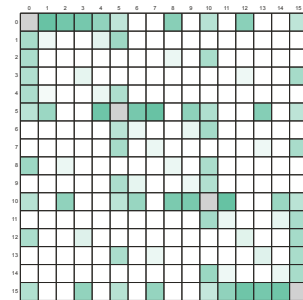
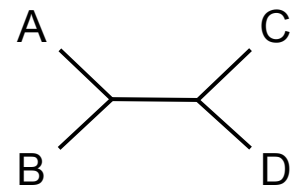


Advances in species tree inference

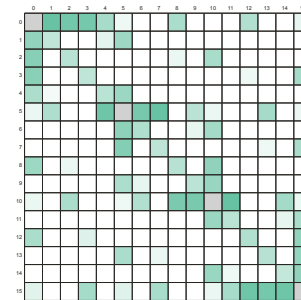
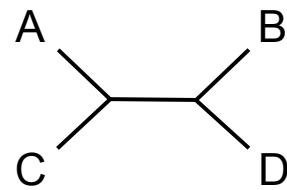
Joint gene tree & species tree inference (e.g., *BEAST, BPP)

Summary inference based on gene-tree inputs (e.g., ASTRAL)

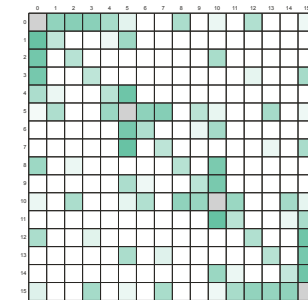
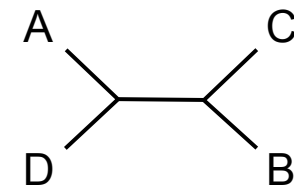
Quartet joining with fast inference from SNPS (e.g., SVDQuartets)



SVD=6.8



SVD=14.2



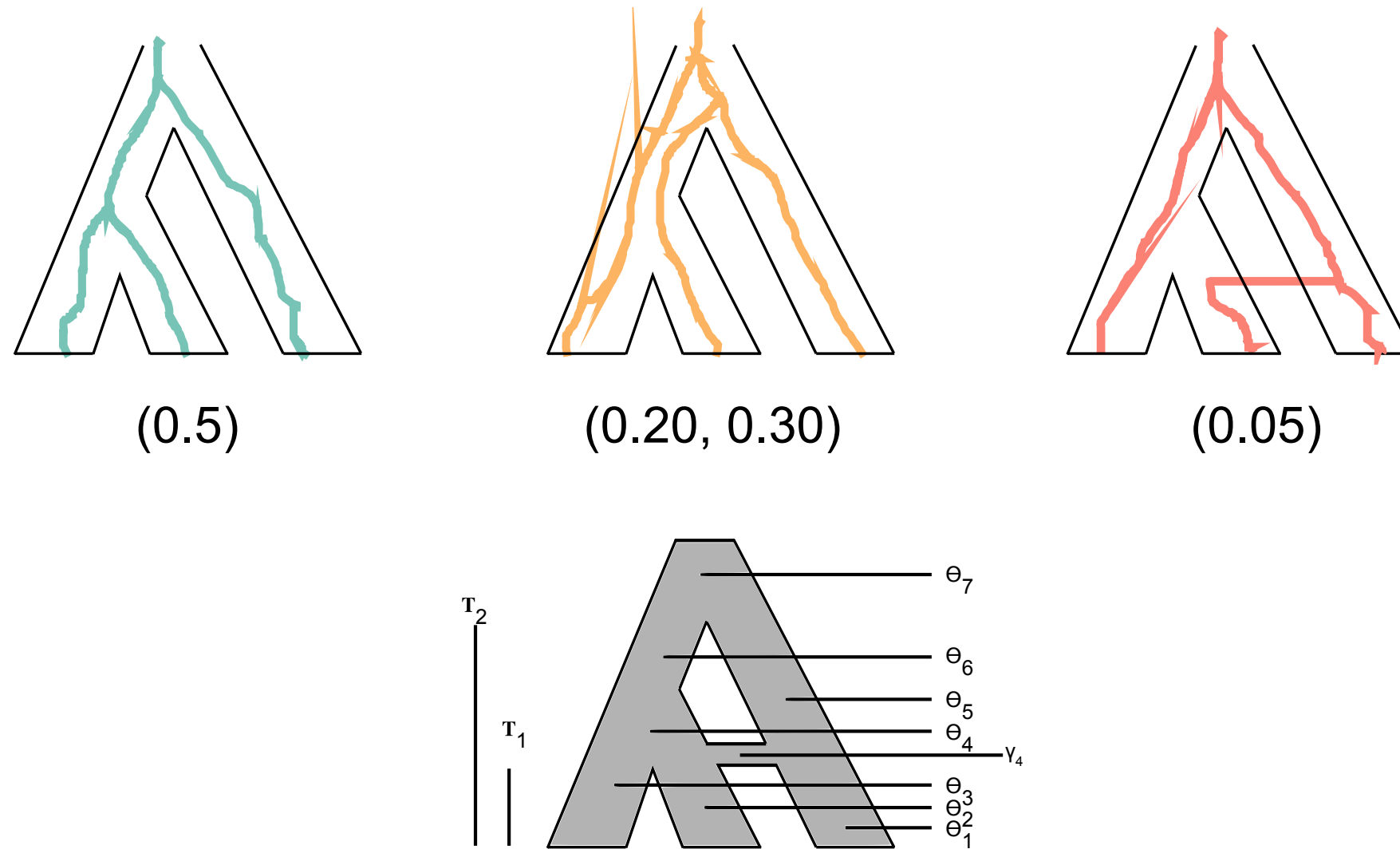
SVD=14.8

Outline: Plant Perspectives

1. Phylogenomic data generation
2. Species tree inference
3. Network/admixture inference
4. Reproductive isolation and phylogenomics
5. Advances on the horizon...

Coalescent variation within a network

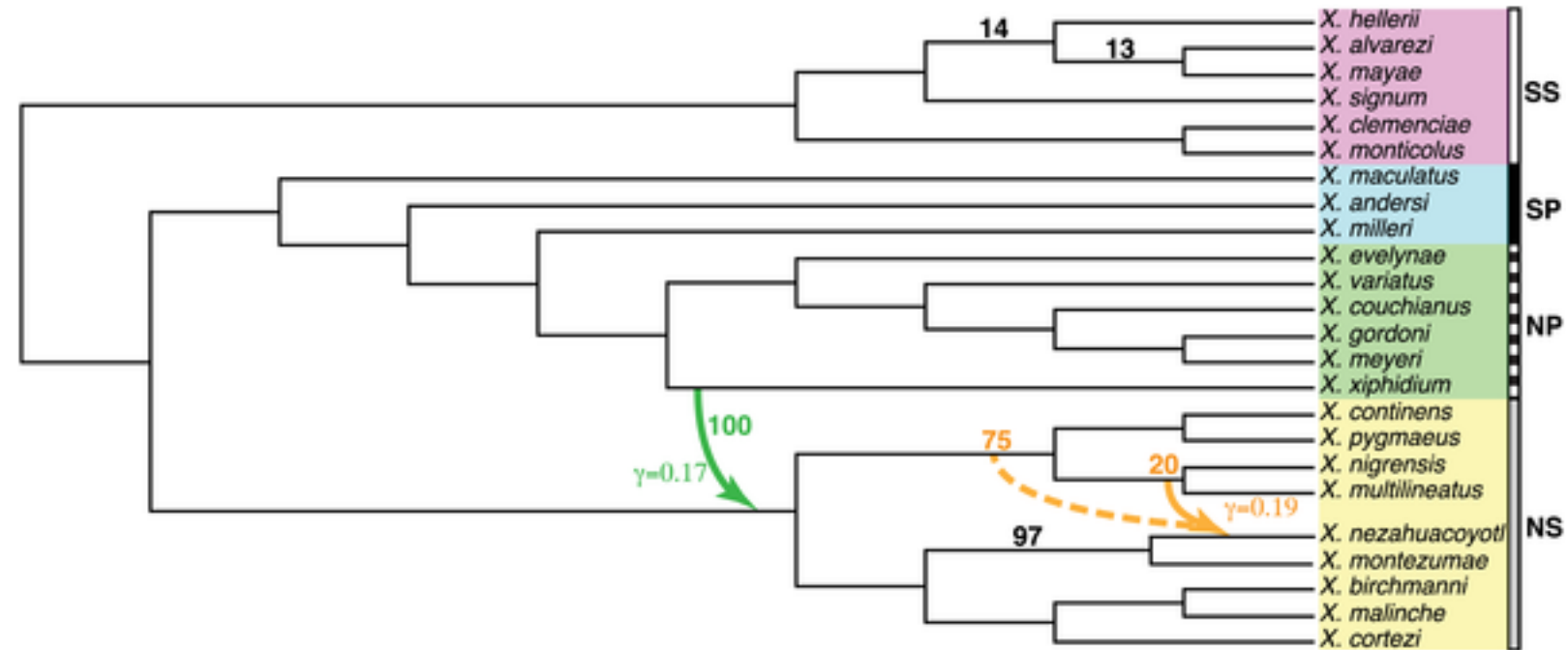
Different genomic regions have different genealogical histories.



Advances in network inference

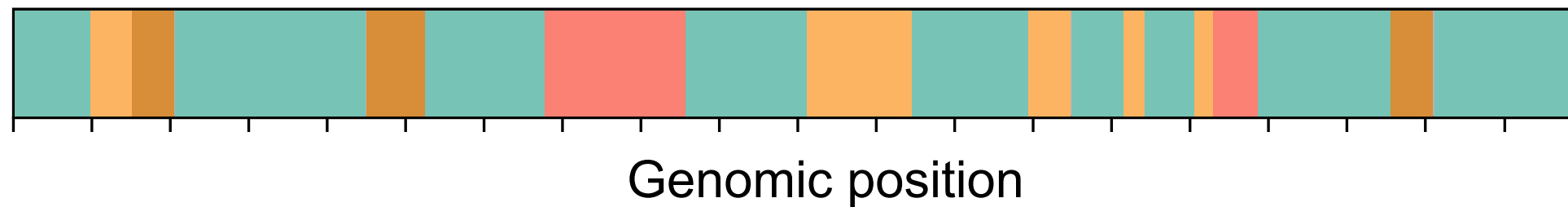
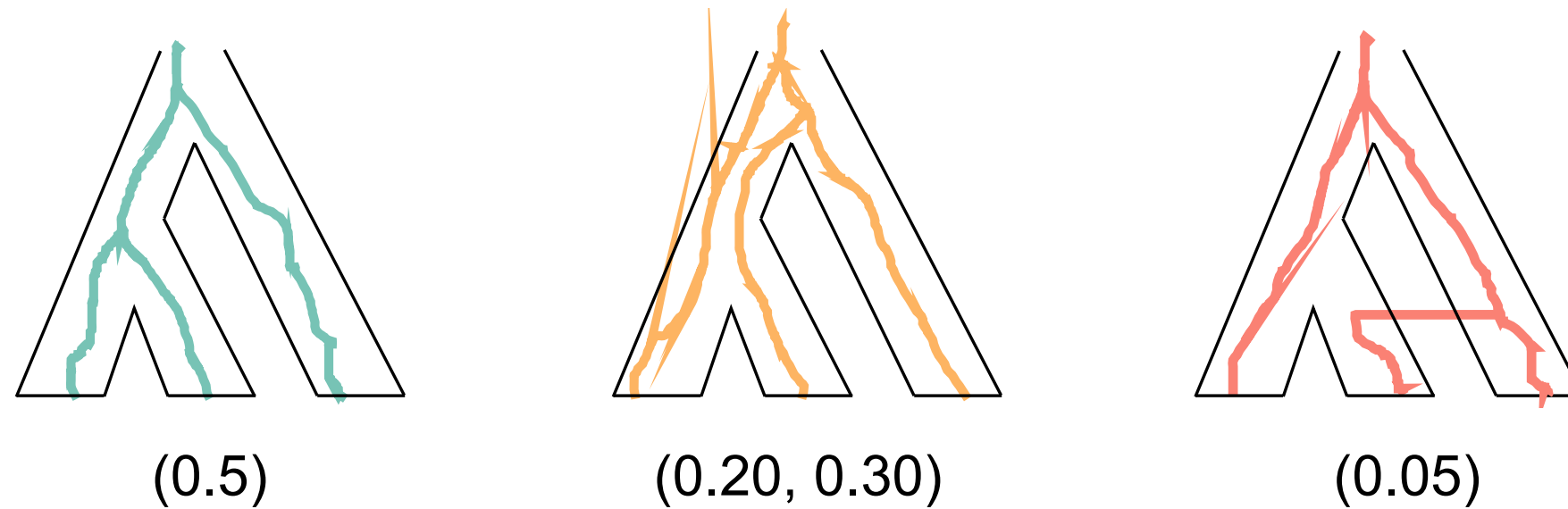
Summary inference based on gene-tree inputs (e.g., Phylonet, SNAQ)

Joint gene tree & network inference (e.g., Phylonet, BEAST2)



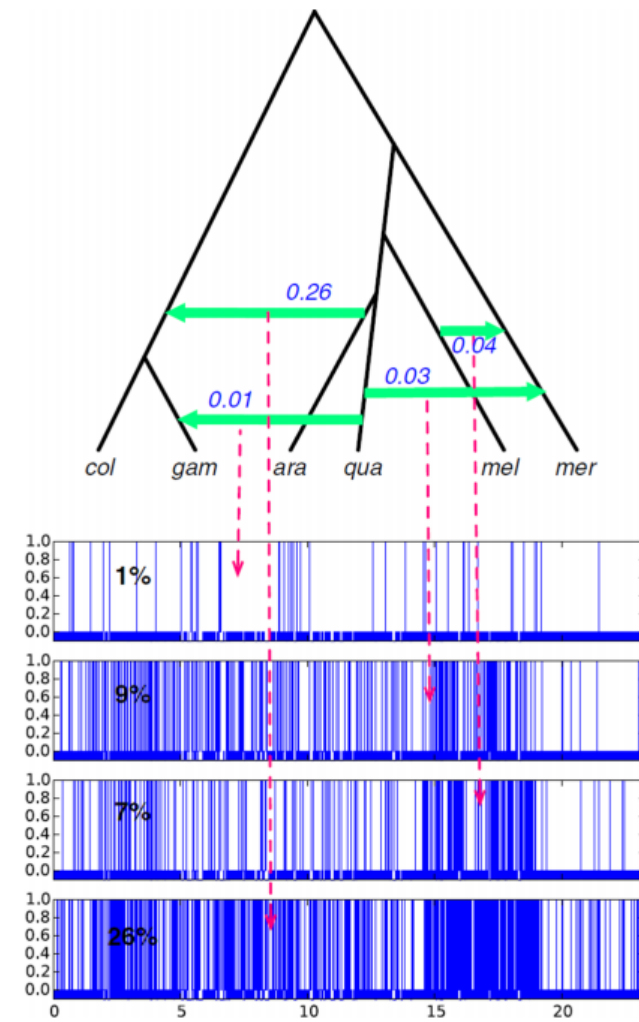
Coalescent variation within a network

Different genomic regions have different genealogical histories.



Coalescent variation within a network

Different genomic regions have different genealogical histories.



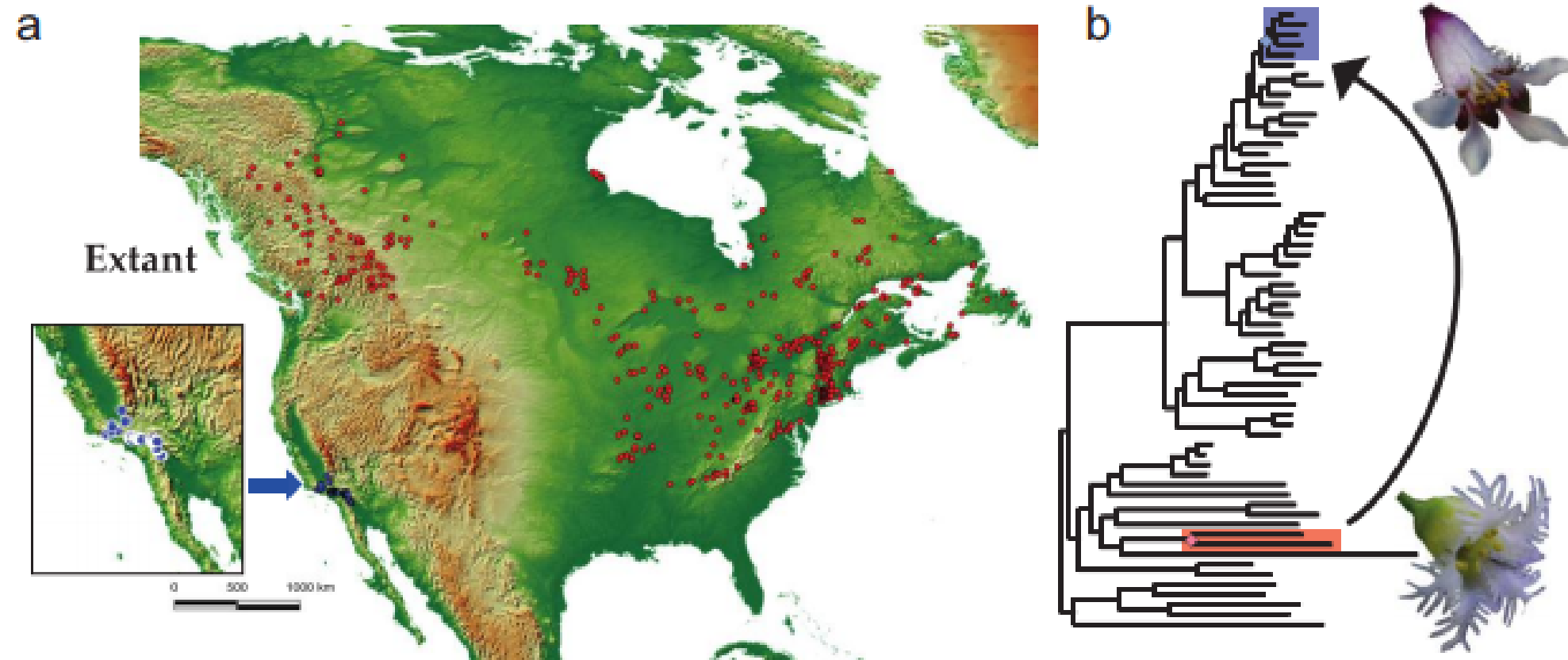
Wen et al. (2016)

Outline: Plant Perspectives

1. Phylogenomic data generation
2. Species tree inference
3. Network/admixture inference
4. Reproductive isolation and phylogenomics
5. Advances on the horizon...

Introgression in the context of biology

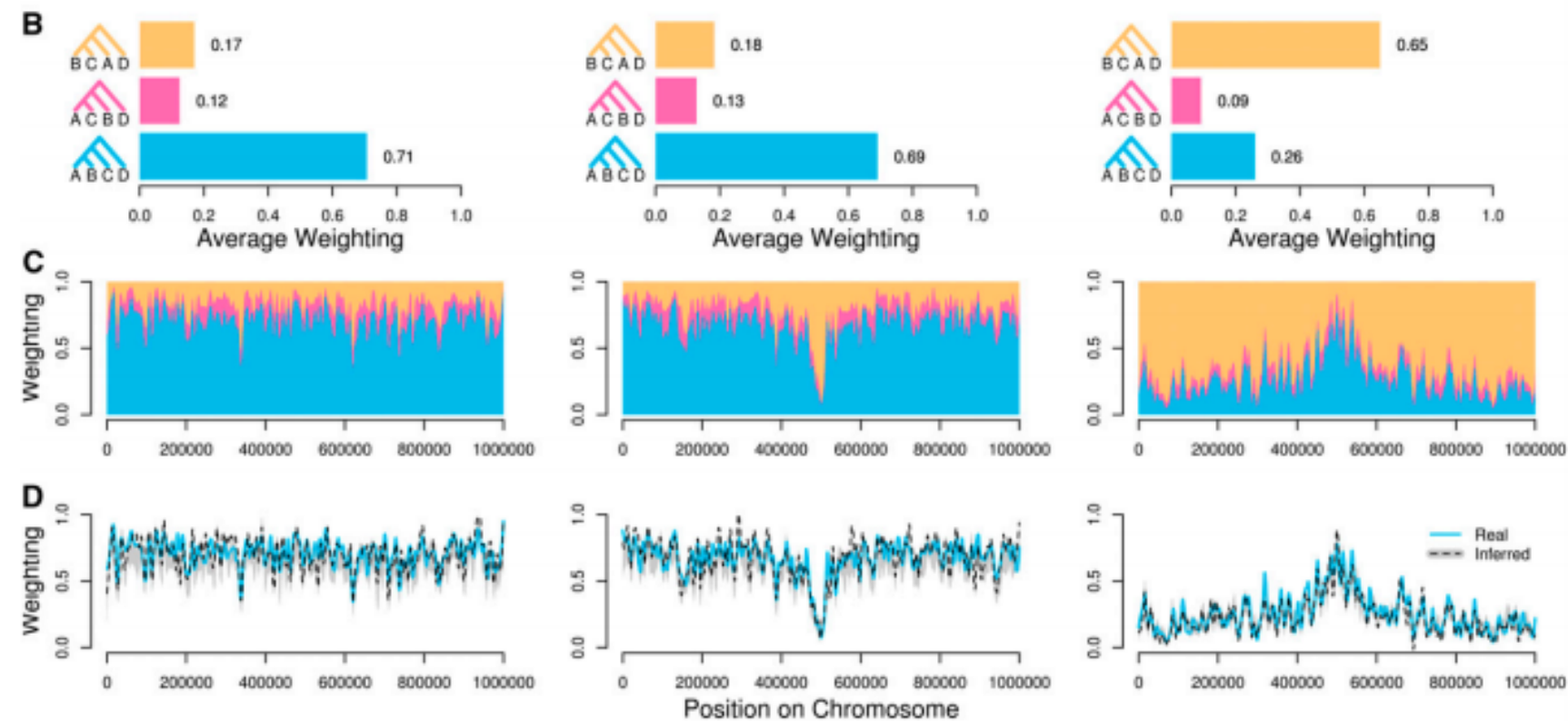
Are introgressive patterns concordant with reproductive traits, or geography?



Folk et al. (2018)

Introgression in the context of biology

Sliding windows can reveal interplay of introgression and selection



Martin et al. (2017)

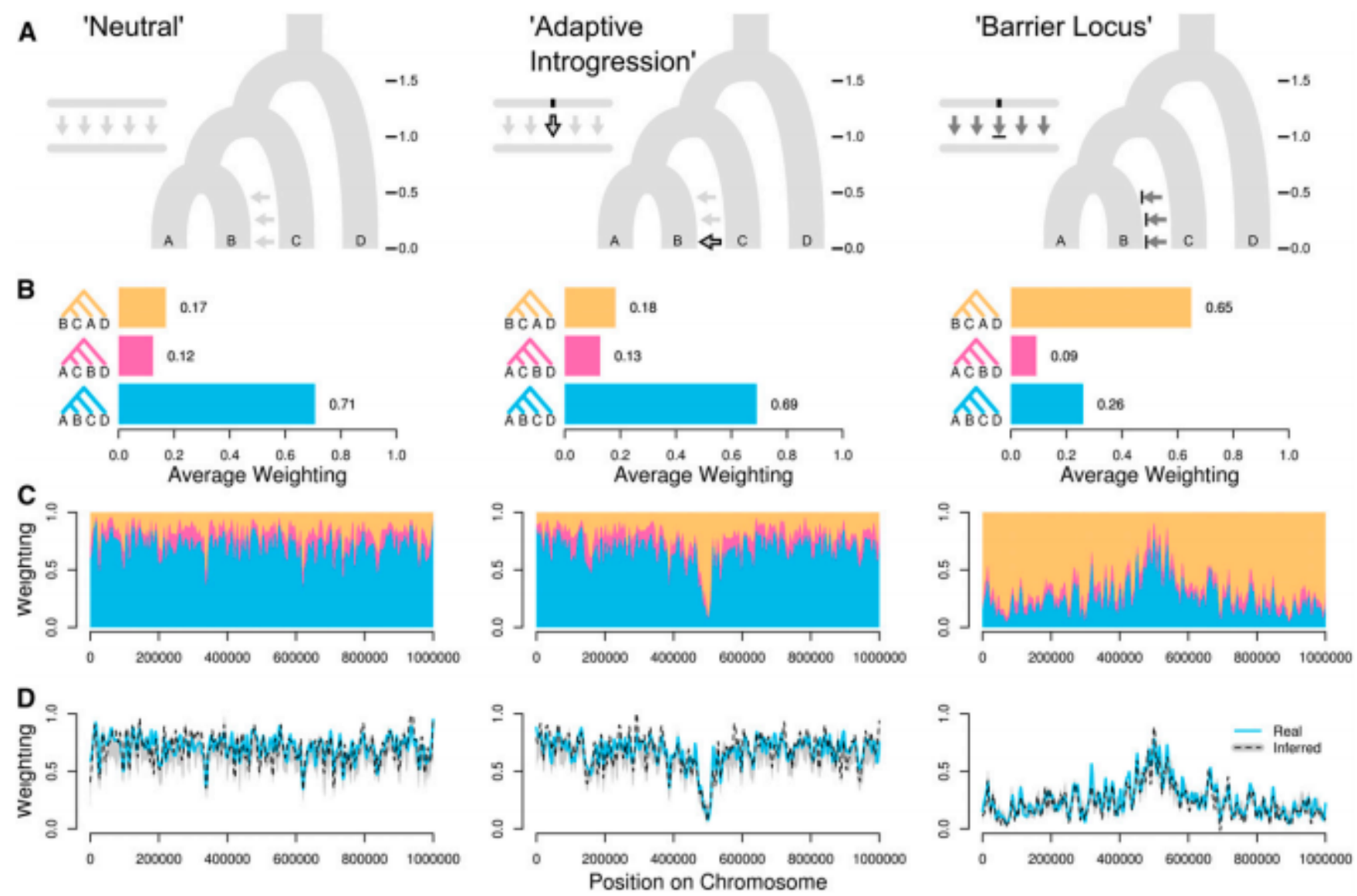
Outline: Plant Perspectives

1. Phylogenomic data generation
2. Species tree inference
3. Network/admixture inference
4. Reproductive isolation and phylogenomics
5. Advances on the horizon...

A disconnect between theory and practice

Sliding windows reveal genealogical variation; but what is our expectation?

Species tree/network models could provide a better null.

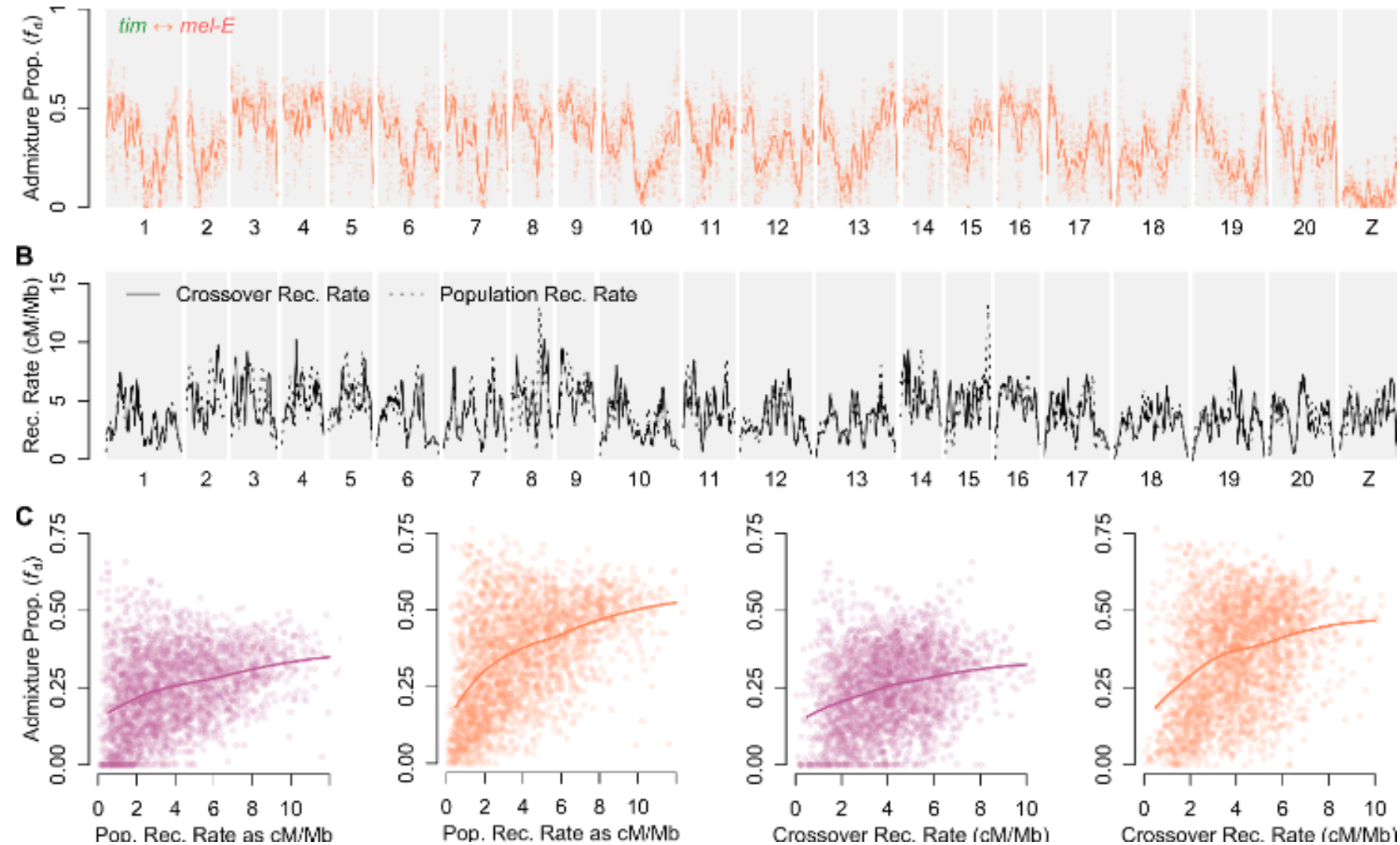


Martin et al. (2017)

Additional sources of information.

Recombination rate are correlated with retention of introgressed blocks

But such data are not readily available for many taxa...



Concluding

- > Increased availability of genome-wide comparative data
- > Hierarchical model inference (e.g., species trees/networks)
- > Spatial investigation (e.g., sliding windows)
- > Introgression in the context of biology (traits, geography, selection)
- > Combining spatial and hierarchical models

Phylogenomic Perspectives on Reproductive Isolation and Introgression



Paul Blischak



Deren Eaton



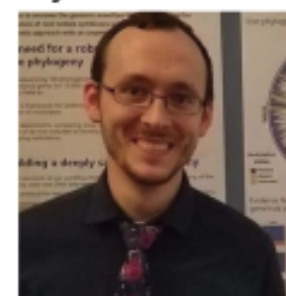
Joanna Rifkin



Patrick McKenzie



James Pease



Ryan Folk